



1

## George Stoney (1713-1787) and Eliza Johnston of Greyfort, Borrisokane and Portland Park on the banks of the river Shannon near Lorrha. 6 girls, 5 boys

George was intelligent, well-educated, and shrewd; an energetic, capable and successful landlord and farmer who greatly enlarged his property and interests so that he was able to leave his six daughters 'handsome fortunes', and four of his sons 'sufficient property to start them as gentlemen.' Portland (left) and Greyfort (right)

Remains of Portland Park near Portumna Bridge



The follow



Remains of Greyfort House, Borrisokane

S)

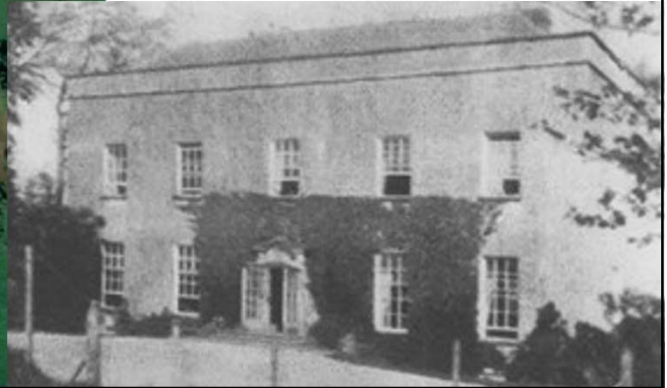
2

# Descendants of James Johnston Stoney



Oakley Park, Clareen, Birr

Photo below from early 1900's courtesy of  
Mary Corcoran Boissel



3

## Bindon Blood Stoney, FRS, 1828 - 1909

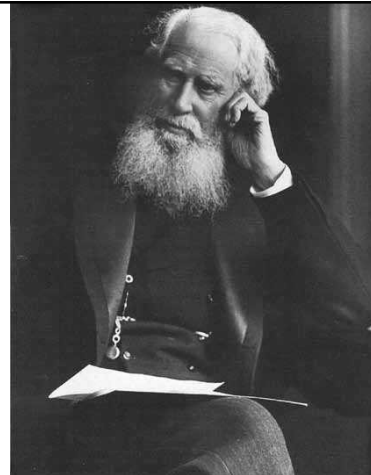
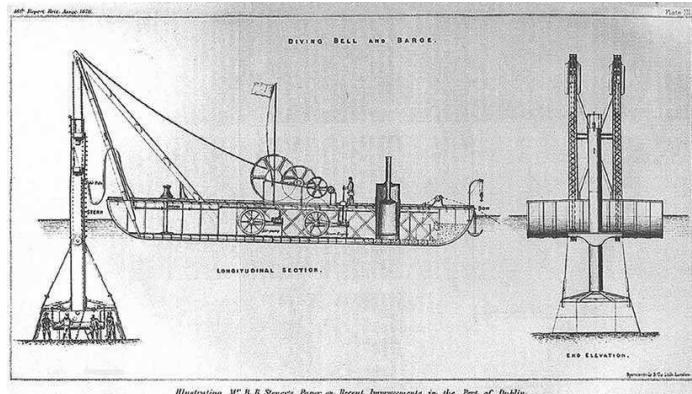


Image courtesy of the National  
Maritime Museum of Ireland

4

## Diving bell and barge

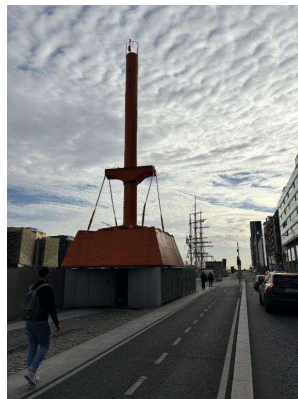
---



5

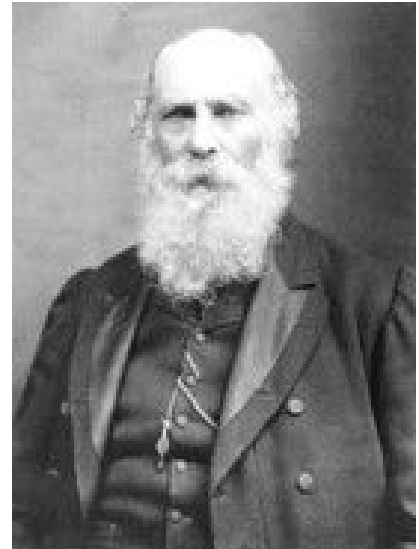
## Bindon Blood Stoney's Diving Bell today

---



6

## George Johnstone Stoney FRS, 1826 - 1911



He married Margaret Sophia Stoney in 1843 and had 6 children, 3 of whom will be introduced in the following slides.

7

## George Gerald Stoney FRS, 1863 - 1942



'Oakley', Heaton Rd, Newcastle-upon-Tyne

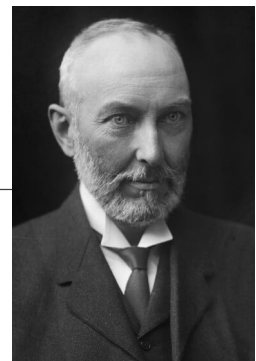
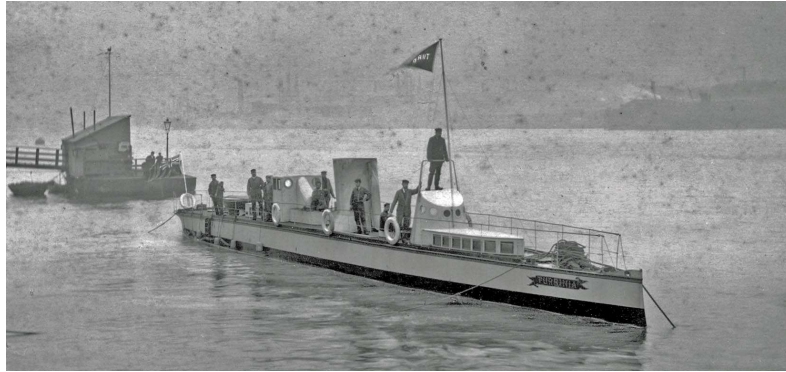


Image courtesy of the National Portrait Gallery

8

## The *Turbinia* with Gerald Stoney below Charles Parsons on the bridge

---

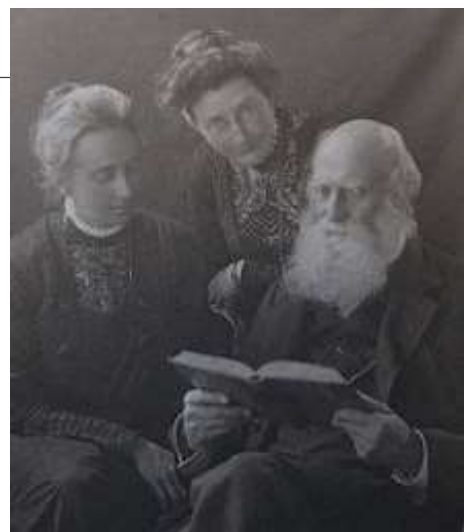


9

## Edith Anne Stoney, [FCdG](#), 1868 - 1938

---

Edith, Florence and their father, George Johnstone Stoney



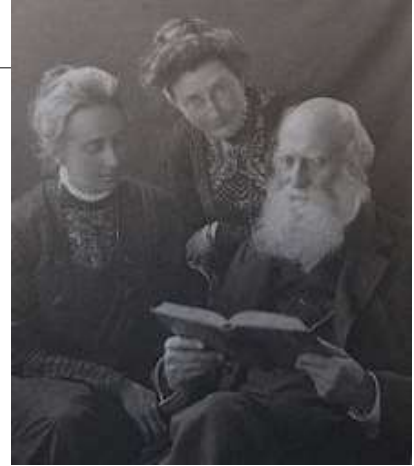
In 1936, she set up the Johnstone and Florence Stoney Studentship which is still supporting research in the sciences through the British Federation of Women Graduates.

10

Florence Ada Stoney,  
1870 – 1932  
Officer OBE 1919

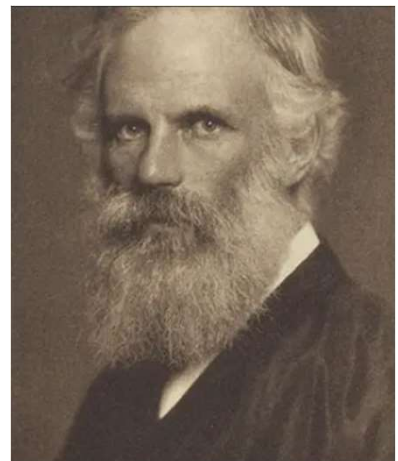
2<sup>nd</sup> daughter of [George Johnstone and Margaret Stoney](#).

Florence, Edith and their father, George Johnstone Stoney



11

George Francis Fitzgerald, [FRS](#), 1851-1901



'impulsive, hot-tempered and totally unselfconscious; he alternated between abstract meditation, highly individual experimentation, and passionate advocacy for his favourite causes'. |

12

## Thomas Stoney of Arran Hill (1748-1826), Deputy Governor of Tipperary

---



13

## Descendants of Thomas Stoney of Arran Hill, at Kyle Park, Kyletombrickane, Borrisokane

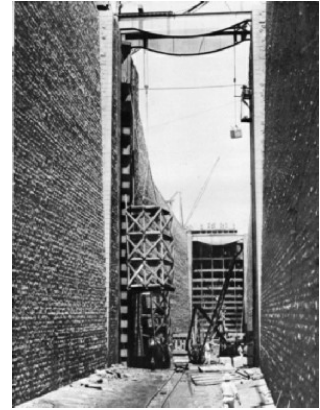


14

## Francis Gould Moroney Stoney 1837 - 1897

---

PART OF THE LOCK SYSTEM at the Aswan Dam. The lock gates, of the F.M. Stoney type, were suspended from rollers by which they could be run into recesses at the sides of the lock. Ref.: <https://www.wondersofworldengineering.com/m/nile.html>



© Wonders of World Engineering 2014-20

15

## Edward Waller Stoney 1844 - 1931

---

4<sup>th</sup> son of Thomas George Stoney and Anna Henrietta Waller of Kyle Park, Tipperary  
Married Sarah Crawford 1875.

They had 1 son **Richard Francis** and 1 daughter **Ethel Sara**.

16



## Richard Francis Stoney 1876 - 1963

Son of Edward Waller Stoney and Sarah Crawford  
Chief Engineer for the Public Works Department of Madras and in that role, he was Executive Engineer for the Mettur Dam Project, which was designed by another Irish engineer, Vincent Hart.

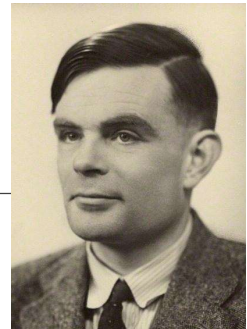
## Colonel Richard Edward Stoney 1916 - 2002

Son of Richard Francis  
A member of the Institution of Electronic and Radio Engineers, he served in the Royal Signals during the 2<sup>nd</sup> World War, retiring from the military in 1962.  
Appointed Member of the Order of the British Empire MBE

17

## Alan Turing 1912 - 1954

Grandson of Edward Waller Stoney, son of Ethel Sara Stoney and Julius Mathison Turing.



18



19

## Rosturk Castle in 1890, developed by R. Vesey Stoney



20

# Rosturk Castle today



21

# Tommy Stoney, of Stoneystudio



22

## Stoney CNC

---



23

## Portraits by Benita Stoney in egg tempera

---

VOLKER



NICOLA

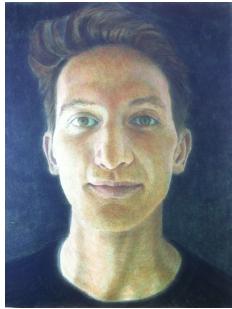


24

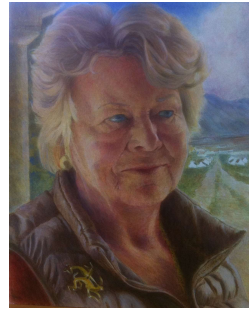
## Portraits by Benita Stoney in egg tempera

---

TOMMY



MARY JO



25

## Portraits by Benita Stoney (oil on canvas)

---



26

## Summary

The descendants of George Stoney and Eliza(beth) Johnston family of North Tipperary and Offaly, like the Parsons family of Birr Castle, have made many contributions to Science, Technology, Engineering, Astronomy, Art and Medicine (**STEAM**) during the 19<sup>th</sup> and 20<sup>th</sup> Centuries.

They too, like so many in Ireland, lost family members in the Great War. Let us never forget them – 11/11/24.

They also contributed to winning the second world war.

Looking down on Clew Bay from Croagh Patrick towards Rosturk Castle

There were 5 Fellows of the Royal Society.

Women were only admitted to Fellowship since [1945](#).

Should Florence Ada and Edith Anne Stoney be recognised as FRS posthumously?

We are lucky to live in a beautiful part of this planet – How so, are we going to preserve it for future generations?

